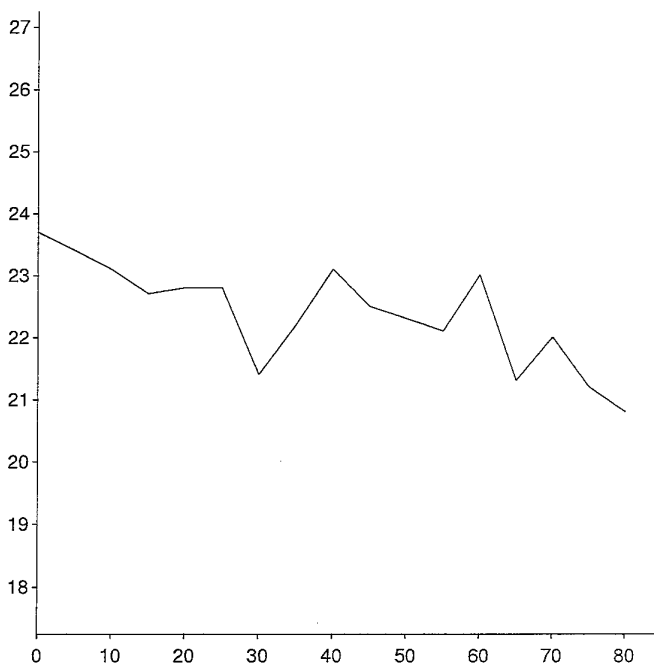
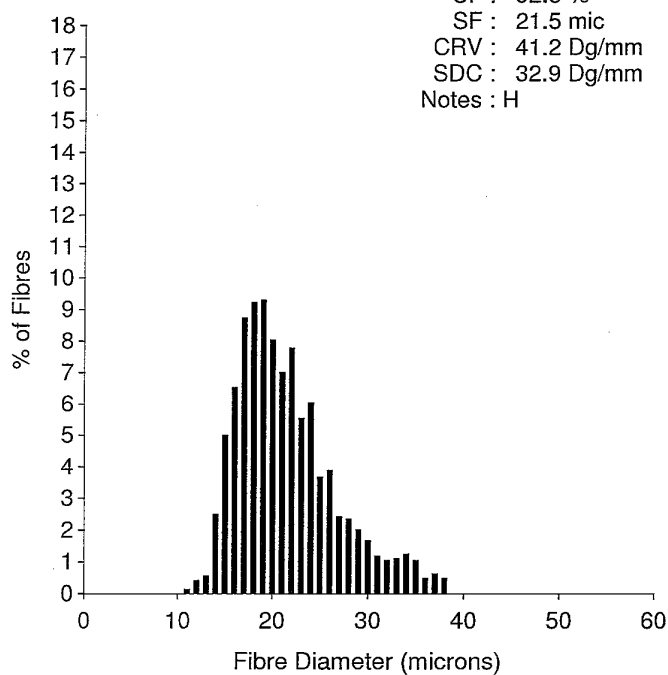


OFDA 2000 REPORT : SORTED BY EID/TAG
 Samples 02/05/2019 (Trim High On) (153Records)

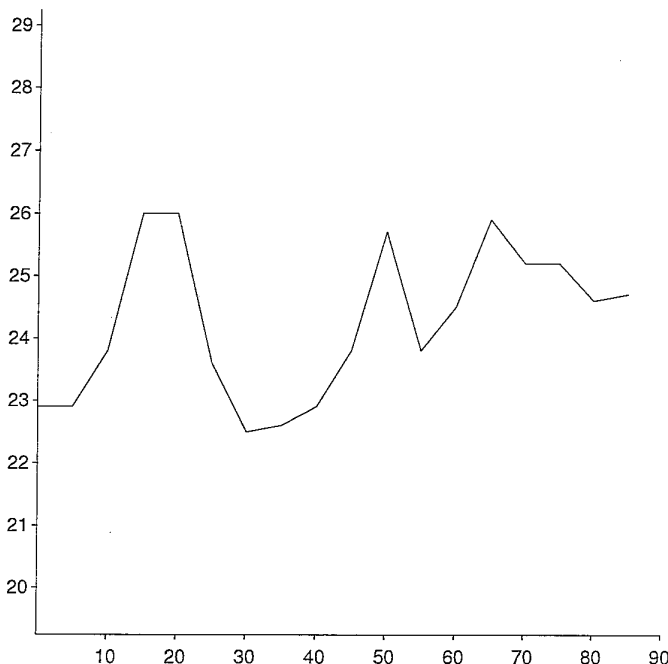
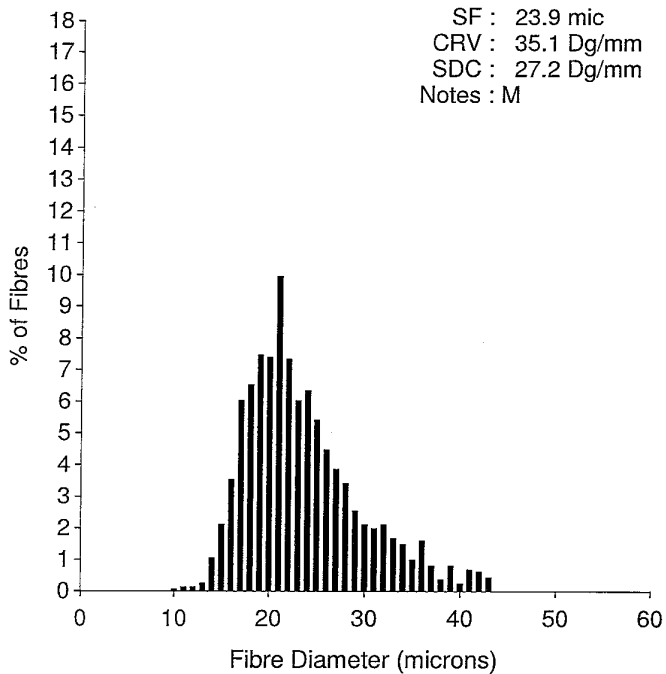
EID : Winter's A
 EarTag : Baroness
 Micron : 21.5 mic
 SD : 5.2 mic
 CVD : 24.3 %
 CEM : 11.5 mic
 <15 : 3.6 %
 CF : 92.8 %
 SF : 21.5 mic
 CRV : 41.2 Dg/mm
 SDC : 32.9 Dg/mm
 Notes : H

Staple Len : 85.0 mm
 Min Mic : 20.8 mic
 Max Mic : 23.7 mic
 SD Along : 0.80 mic



EID : Winter's A
 EarTag : Baroness
 Micron : 23.6 mic
 SD : 6.0 mic
 CVD : 25.7 %
 CEM : 12.8 mic
 <15 : 1.6 %
 CF : 86.1 %
 SF : 23.9 mic
 CRV : 35.1 Dg/mm
 SDC : 27.2 Dg/mm
 Notes : M

Staple Len : 90.0 mm
 Min Mic : 22.5 mic
 Max Mic : 26.0 mic
 SD Along : 1.20 mic



EID : Winter's A
 EarTag : Baroness
 Micron : 22.8 mic
 SD : 5.6 mic
 CVD : 24.7 %
 CEM : 12.0 mic
 <15 : 2.1 %
 CF : 89.2 %
 SF : 22.9 mic
 CRV : 41.8 Dg/mm
 SDC : 31.8 Dg/mm
 Notes : V

Staple Len : 75.0 mm
 Min Mic : 21.6 mic
 Max Mic : 26.7 mic
 SD Along : 1.30 mic

